

ILL. No.	Part No.	Description	Qty. Rqd.
----------	----------	-------------	-----------

## FRONT AXLE AND DRIVE SHAFTS

### REMARKS LEGEND -

Vehicle i.d. (v) numbers:

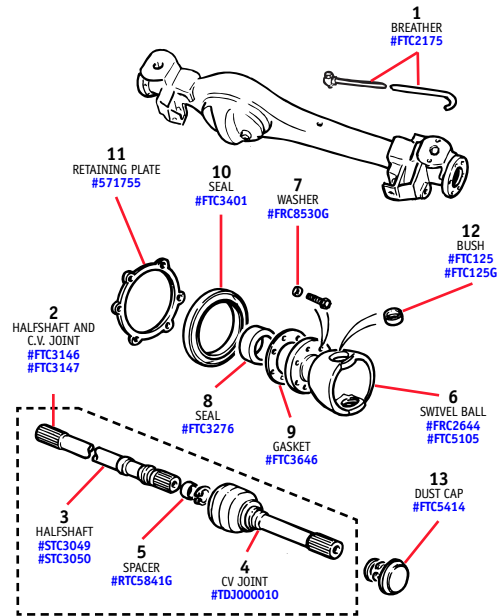
TA = 1996 model year

Axle (a) numbers:

78L = front axle

### MONEY-SAVING KITS NOTED IN RED TYPE

#### Front Half Shaft and C.V. Joint



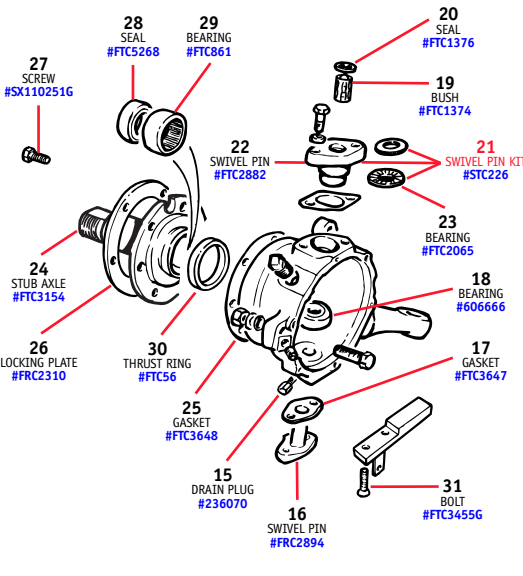
1	FTC2175	BREATHER, axle case	1
2	FTC3146	HALF SHAFT AND C.V. JOINT ASSY, RH	1
3	FTC3147	HALF SHAFT AND C.V. JOINT ASSY, LH	1
3	STC3049	HALF SHAFT, front, RH	1
3	STC3050	HALF SHAFT, front, LH	1
4	TDJ000010	CONSTANT VELOCITY JOINT	2
4	RTC5841G	SPACER, halfshaft, Genuine	2
5	FRC2644	SWIVEL BALL, chrome	2
5	FTC5105	SWIVEL BALL, black	2
7	FRC8530G	WASHER, swivel ball bolt, Genuine	14
8	FTC3276	OIL SEAL, small, swivel ball	2
9	FTC3646	GASKET, swivel ball (joint washer)	2
10	FTC3401	OIL SEAL, large, swivel ball	2
11	571755	RETAINING PLATE, swivel ball seal	2
12	FTC125	BUSH, swivel pin (Railco bush)	2
12	FTC125G	BUSH, swivel pin, Genuine (Railco bush)	2
13	FTC5414	DUST CAP	2
		From (a) 78L53960A on	

ILL. No.	Part No.	Description	Qty. Rqd.
----------	----------	-------------	-----------



**14**  
REPLACEMENT KIT,  
C.V Joint  
#9365

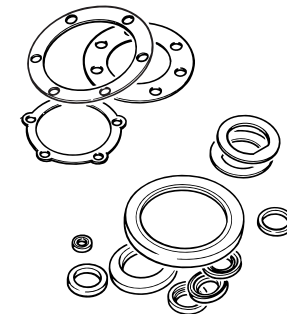
#### Swivel Housing and Stub Axle



14	9365	REPLACEMENT KIT, C.V. joint	2
		Includes one C.V. joint plus all gaskets and seals required	
15	236070	DRAIN PLUG, swivel pin housing	2
16	FRC2894	SWIVEL PIN, lower	2
17	FTC3647	GASKET, lower swivel pin	2
18	606666	BEARING, lower swivel pin	2
19	FTC1374	BUSH, ABS sensor	2
20	FTC1376	OIL SEAL, ABS sensor	2
20	FTC1376G	OIL SEAL, ABS sensor, Genuine	2
21	STC226	SWIVEL PIN KIT, upper	*NLA
		Includes bearing and thrust washer	2
22	FTC2882	SWIVEL PIN, upper	2
23	FTC2065	BEARING, upper swivel pin	2
24	FTC3154	STUB AXLE	2
25	FTC3648	GASKET, stub axle to swivel pin housing	2
26	FRC2310	PLATE, locking, Genuine	2
27	SX110251G	SCREW, stub axle to swivel pin housing, Genuine	12
28	FTC5268	OIL SEAL, stub axle	2
		From Nov. 1996 on, approx.	
29	FTC861	BEARING, stub axle	2
30	FTC56	THRUST RING	2
31	FTC3455G	BOLT, threadlocked, shock to housing, Genuine	2

ILL. No.	Part No.	Description	Qty. Rqd.
----------	----------	-------------	-----------

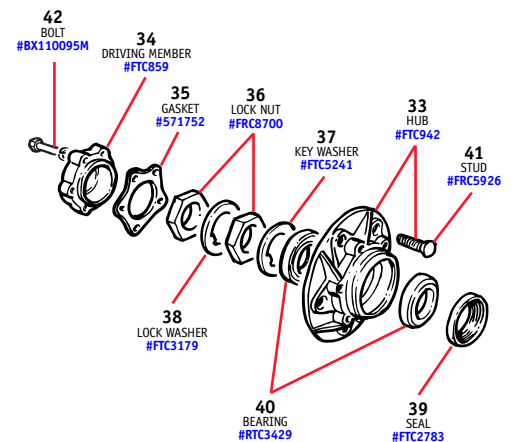
#### 32 Swivel Housing Seal Kit #STC3321



**32**  
SEAL KIT  
#STC3321

32	STC3321	SEAL KIT, swivel pin housing	2
		Includes gaskets, seals and lockwashers for 1 housing	
	STC3435	GREASE, swivel pin housing, 370g bottle	A/R
	STC3435G	GREASE, swivel pin housing, 375ml tube, Genuine	A/R
		Factory recommended	

#### Front Hub Assembly



33	FTC942	HUB ASSEMBLY	2
		Includes studs; without bearings or seals	
34	FTC859	DRIVING MEMBER	2
35	571752	GASKET, driving member	2
36	FRC8700	LOCK NUT, hub	4
37	FTC5241	KEY WASHER, hub	2
38	FTC3179	LOCK WASHER, hub	2
39	FTC2783	SEAL, inner	2
		Through (v) TA196457 and TA527236	
40	RTC3429	BEARING, hub, inner and outer	4
41	FRC5926	STUD, hub	10
42	BX110095M	BOLT, threadlocked, axle to hub	10